



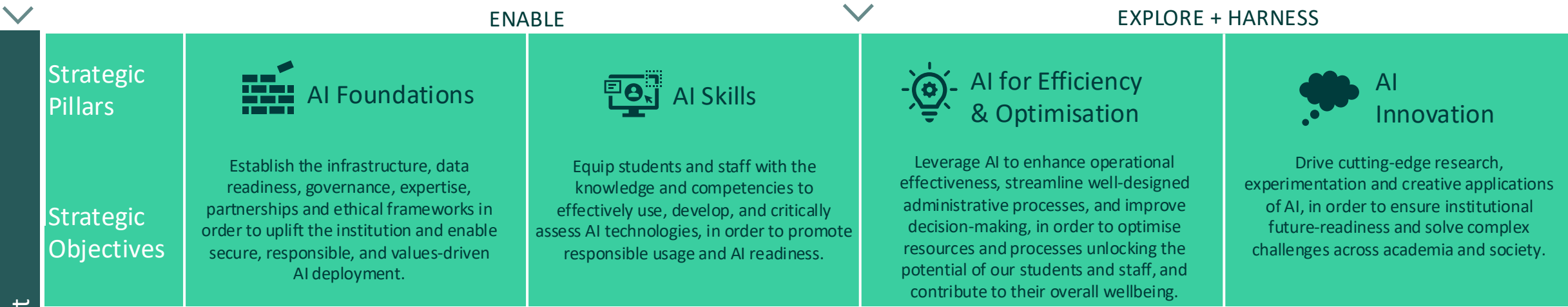
University  
*of* Exeter

## Piloting AI-powered technology in education

Megan Kime  
Director of Education Innovation

Why	2030 Vision	We will use the power of our education and research to create a sustainable, healthy and socially just future
-----	-------------	---

How	AI Vision	We envision a future where AI serves as a transformative force – empowering our people, enriching our education and student experience, and driving world-leading research responsibly, ethically and sustainably to amplify our global impact.
-----	-----------	---



	Theme Objectives & Key Results (OKRs)
--	---------------------------------------

# Our AI Adoption Principles



## Empower Innovation

Enable staff, students, and researchers to harness AI tools and applications to enhance education, streamline administrative processes, and drive groundbreaking research.

AI should be a catalyst for creativity, efficiency, and academic excellence, ensuring the University remains at the forefront of digital transformation.

## Manage Risks

Identify, assess, and mitigate potential risks associated with AI, including bias, misinformation, data security, and privacy concerns.

AI should be implemented in a way that safeguards academic integrity, maintains public trust, and ensures compliance with UK and global regulatory frameworks.

## Ethical and Responsible Usage

AI adoption must align with the University's core values, upholding fairness, transparency, and accountability. AI should support, not replace or override the decisions or insights of our people.

AI systems will be deployed in line with relevant legislation, including data protection, academic integrity, and ethical AI governance, ensuring trust and responsible stewardship of technology.

## Promote Collaboration

Foster interdisciplinary collaboration across faculties, IT teams, and external partners to integrate AI into the University's broader Digital Transformation and Data strategies.

Encourage shared learning, co-creation, and engagement with industry, government, and academia to maximise the benefits of AI-driven solutions. We will take an inclusive, participatory approach to AI adoption, creating space for feedback, experimentation, and shared ownership across our community.

## Future Ready and Sustainable

Equip the University community with the skills, governance structures, and technical foundations required to navigate the evolving landscape of AI and GenAI.

Ensure AI is deployed in a sustainable manner, aligned with the University's Climate Strategy and Net Zero commitments by prioritising energy-efficient models, responsible usage, and minimising environmental impact. Working with Sustainability, IT, and Procurement teams to improve supply chain sustainability, and embed environmental criteria into AI-related decisions.



University  
of Exeter

## AI Policy



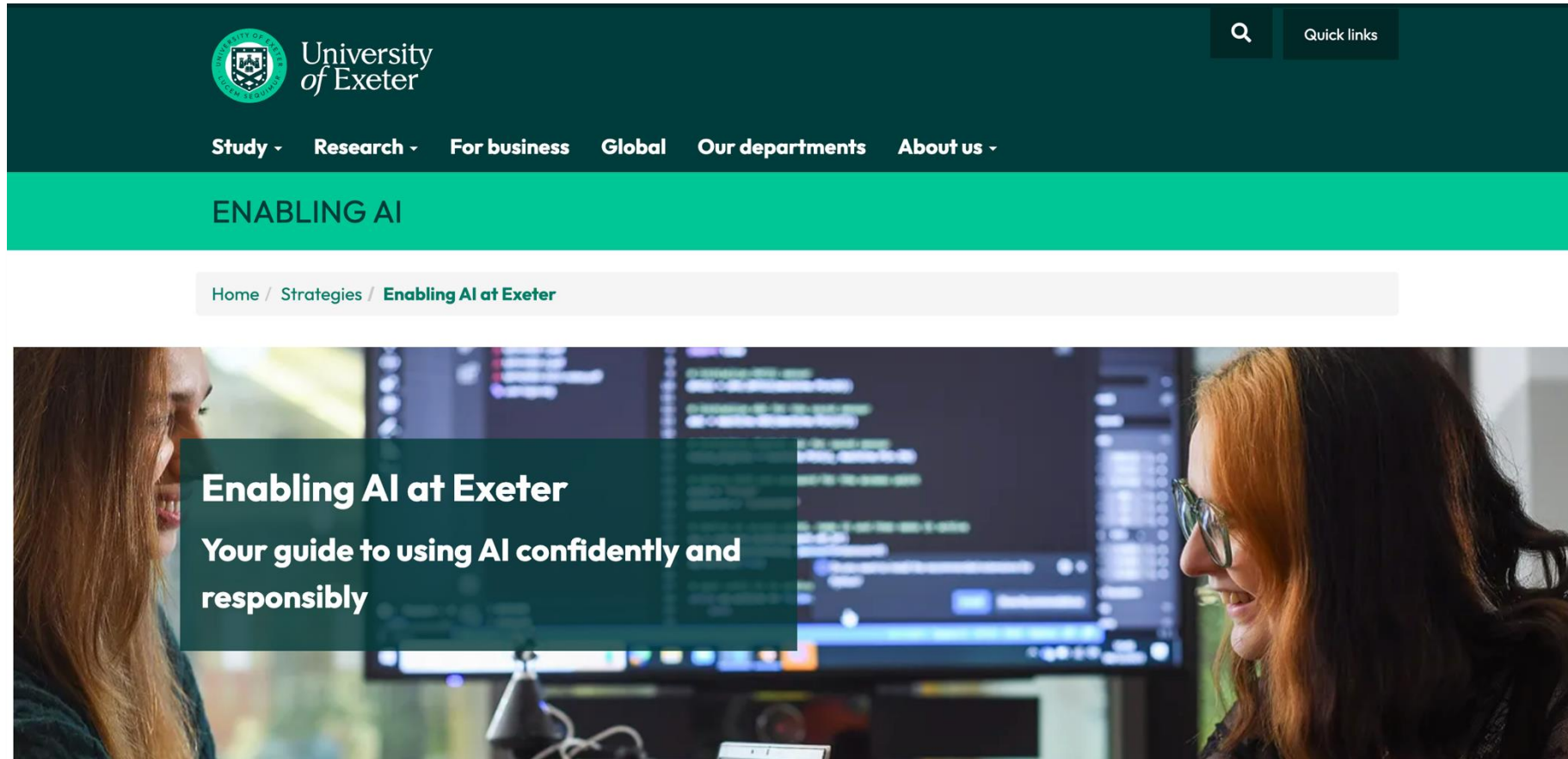
## Information Classification Scheme



## AI Catalogue



# Enabling AI @ Exeter



<https://www.exeter.ac.uk/about/vision/enabling-ai/>

# Pilots within Education



**Personalised Learning:** Kortext, LearnWise

**Marking and Assessment:** Graide (with JISC)

- Aligned to existing strategic priorities
- Aiming to gain deeper understanding of potential benefits for students and staff
- Also to gain insight into challenges and questions raised through implementation
- Piloting not procurement



**LearnWise**

**G graide**

# Approach to piloting

## User Experience Research activity:

- Pre-pilot insights from students
- Diary studies
- Post-pilot surveys
- Workshops with students not involved in pilot

## Guardrails:

- Optional student participation
- Acknowledging risks
- Data Protection Assessment
- Restricted scope



**Transforming  
education together**



University  
*of* Exeter

