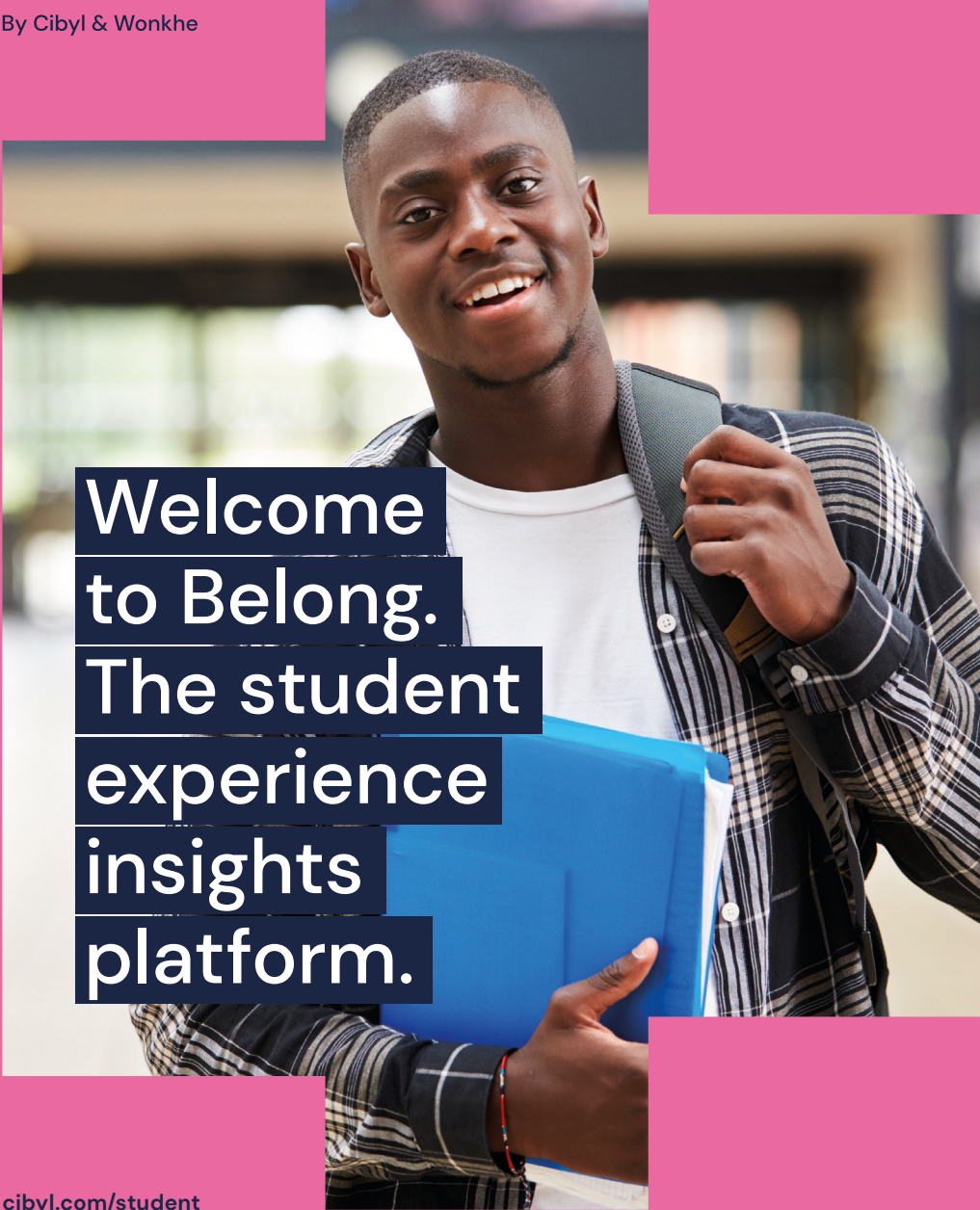


Belong

By Cibyl & Wonkhe



Welcome
to Belong.
The student
experience
insights
platform.

cibyl.com/student



We are working to create the **UK's most useful**, and most up to date **source of insight** into the student experience.

Belong's mission is to provide students' unions with a robust, reliable and regular way to understand the lives of students and their concerns. The platform is a partnership between a leading student research consultancy, Cibyl (part of Group GTI) and the home of the UK higher education debate, Wonkhe.

Student voice matters and prioritising actions are more important than ever, but capacity and budgets are as tight in the student movement as they have ever been. And without contemporary, robust and benchmarkable data reflecting different student groups, your ability to represent the student body is limited.

Belong will provide this crucial understanding of both your students, and wider trends in the sector. With unprecedented access to students' voices from across UK HE, Belong's insights will be at the forefront of your discussions within the university and across the sector. We combine the rigour of Cibyl's research, and the analysis of Wonkhe to provide a way to support SUs to see and gain support to drive the best actions.

Pioneer cohort (2022-23)

We are looking for five SUs to be part of the pioneer cohort.



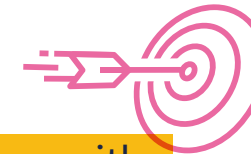
To take part, you will need to:

- Have internal agreement to survey 1/6 of your student body per month for the next six months
- Commit to sharing launch communications to the student body, and sending the monthly survey and communications to the relevant group of students
- Commit to feedback conversations with Cibyl and Wonkhe team members from time to time.

To support you with internal agreement. Cibyl already surveys the full student body in over 140 institutions and 100,000 students. It currently looks at two topics – employability/career ambitions and wellbeing. Student experience will be the 3rd topic area. No personal data is published, and students provide their consent at the point of survey completion.

How it works

We will provide you with:



- Launch communications
- Monthly communications
- Monthly survey link
- Access to 'Your University' dashboard with all Basic, Premium, and Pro features

After the pioneer cohort year is complete, the different features of the platform will be available by tiers. The basic tier is available for free to all Wonkhe SUs subscribers. The Premium and Pro tiers will be charged.

Basic	Premium	Pro
<ul style="list-style-type: none"> ■ Monthly survey to 1/6 of your student body. ■ Access to 'Your University' dashboard for Basic question set. This includes data visualisation, national benchmarking. 	<ul style="list-style-type: none"> ■ Monthly survey to 1/6 of your student body. ■ Access to 'Your University' dashboard for Premium question set. This includes data visualisation, national benchmarking. 	<ul style="list-style-type: none"> ■ Monthly survey to 1/6 of your student body. ■ Access to 'Your University' dashboard for Premium question set. This includes data visualisation, national benchmarking. ■ Dashboard filtering by demographic information.

Belong

By Cibyl & Wonkhe



**For more information,
or to get involved:**

Contact Rachel Johnson at Cibyl
emailcibyl@groupgti.com

cibyl.com/student