

INTRODUCING




WONKHE

SUs

Wonkhe is the home of higher education policy, bringing the sector together through expert, trusted and essential analysis.

A community of diverse voices, we provide platforms to drive the policy conversation forward and bring about real change.

We like to do things differently, offer the unexpected and challenge the status-quo. And all because we love HE and want to make it better for everyone.



Why Wonkhe SUs?

Representing students effectively is tough when policy is complex, confusing and constantly changing. We know that officers and staff that understand the environment are more effective, and get more done. We will help with that.

We think the challenges on students and students unions are increasing, and require rapid, creative thinking. We can both provide and facilitate that too.

We love students' unions. Many of us began our careers in students' unions. We think the UK students' union system is unrivalled around the world and makes UK higher education better. So we naturally want to deliver work in this area.

We see work with students' unions as an investment in our mission to improve higher education policymaking, provide a platform unheard and diverse voices, and an opportunity to support the sector's wider talent pipeline.

We're not a representative body - we'll never seek to speak on behalf of students or students' unions. That's your job, along with your national union. We're also not a campaigning body - there won't be a national demonstration or a lobby of parliament.

We're not democratic and we're non-partisan. That doesn't mean you won't hear professional opinions from the team and doesn't mean we won't involve SUs and students in our work - but we won't take a policy position or have an elected committee.



We mean policy

As well as strict higher education policy, we have an interest in and expertise in wider areas that apply to HE - like equality and diversity, governance and charity law, and freedom of speech.

We know you are busy - so we'll do the reading so you don't have to, distilling the essentials and helping you lead and deliver for your students in the process. When you are as familiar with the issues as your university's senior team, you're more effective.

We're up to date - in the sector we're relied upon for our quality and timely analysis so we like to stay nimble and be responsive. We keep our operation lean, our partnerships wide and don't get bogged down by bureaucracy or layers of complexity.

The offer

WONKHE STUDENTS' UNIONS - BASIC £2000 (+VAT)

- Twice weekly policy briefings and beginner's guides on key issues in higher education
- A bespoke weekly email for SUs featuring the latest developments, news coverage, analysis and opportunities for SUs as well as news from around the network
- Access to our WhatsApp alerts and group
- Access to the Wonkhe Daily - our email briefing sent directly to your inbox before work every day

WONKHE STUDENTS' UNIONS - FULL SUBSCRIPTION £3500 (+VAT)

All of the above, plus

- A entitlement to a day's training for your officers on effective policy analysis and creation
- Team Wonkhe on retainer, offering advice and support with your representation and policy issues
- Weekly interactive webinars from the team on issues in HE you will be discussing with your institution
- Discounted rates to Wonkhe events, including the flagship Wonkfest
- Access to the Wonkhe termly policy digest

WONKHE STUDENTS' UNIONS - ADDITIONAL

As well as our subscriptions, we will also:

- Run bespoke events and seminars aimed specifically at students' union officers and staff
- Access to bespoke opt-in projects on key contemporary policy issues raised in manifestos and strategies
- Strike a partnership to offer impactful collective student research that has an impact
- Offer specific services, both in house and with leading partners, to develop your policy and representation work and thinking
- Practitioner forums for key management and policy staff with access to key sector bodies
- Contribute the latest thinking to student movement events
- We'll also help you respond to consultations, understand the local implications or national issues, and identify opportunities to apply for funding

The Team



MARK LEACH | WONKHE CEO

As well as working in parliament and for the funding council, Mark was a founding staff member of the higher education unit at NUS where he led on quality and student experience work, postgraduates and international students, and where he originally dreamt up Wonkhe. He was a student officer at the University of Kent.



DEBBIE McVITTY | WONKHE EDITOR

As well as holding senior roles at Universities UK and the University of Bedfordshire, Debbie was previously Head of Higher Education at NUS where she led on SU/University partnership working and student engagement.



JIM DICKINSON | WONKHE ASSOCIATE EDITOR

Jim will lead the work on students' unions at Wonkhe day to day. Jim has significant experience in the student movement having been a student officer for UWE students union, and has held multiple senior roles at NUS across policy, strategy and membership. He has also been chief executive at UEA students' union.

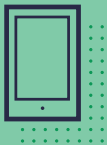


RACHAEL FIRTH | WONKHE COO

Rachael brings a wealth of experience in students' unions, at Beds SU as an officer and later lay trustee; and later at NUS as Deputy Group Head of Events where she led on the development of policy and education events for officers and staff.

Wonke's wider team of associate editors do the reading so you don't have to.

We have expertise in everything from equality and diversity to access and participation, freedom of speech to fees and funding and both sector and SU specific regulation.



CONTACT US

To subscribe now, to ask a question or to find out more, drop us an email sus@wonkhe.com and we'll be in touch.